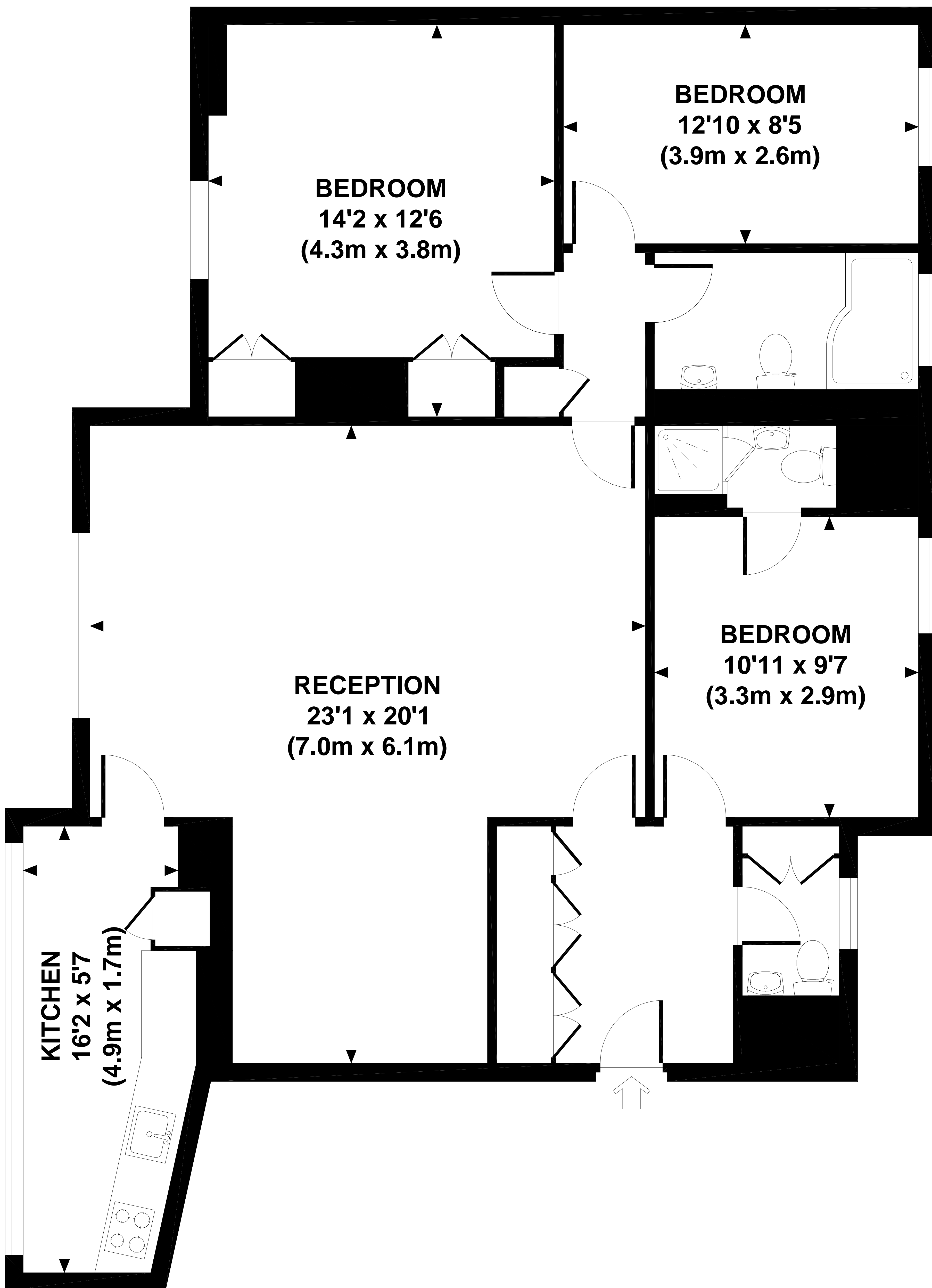
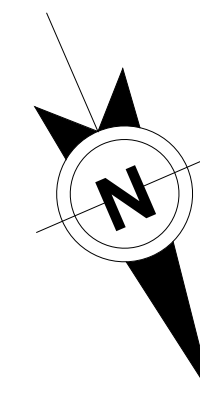


BOYDELL COURT

Approximate Gross Internal Area 1091 sq ft / 101.4 sq m



**FIFTH FLOOR
GROSS INTERNAL
FLOOR AREA 1091 SQ FT**

Although every attempt has been made to ensure accuracy, all measurements are approximate. The floor plan's for illustrative purposes only and not to scale. Measured in accordance to RICS standards. DE-PHOTOGRAPHY.NET