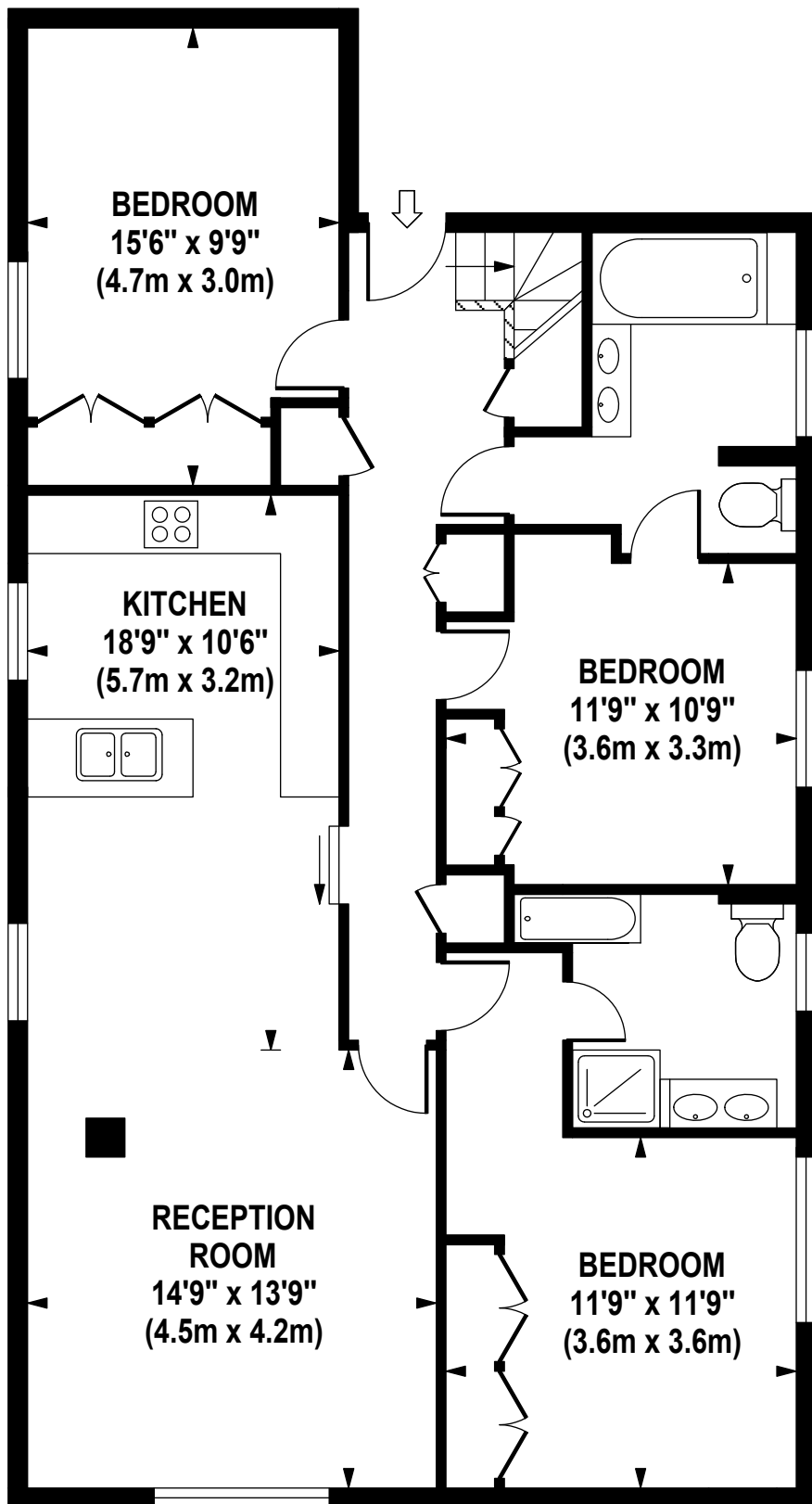
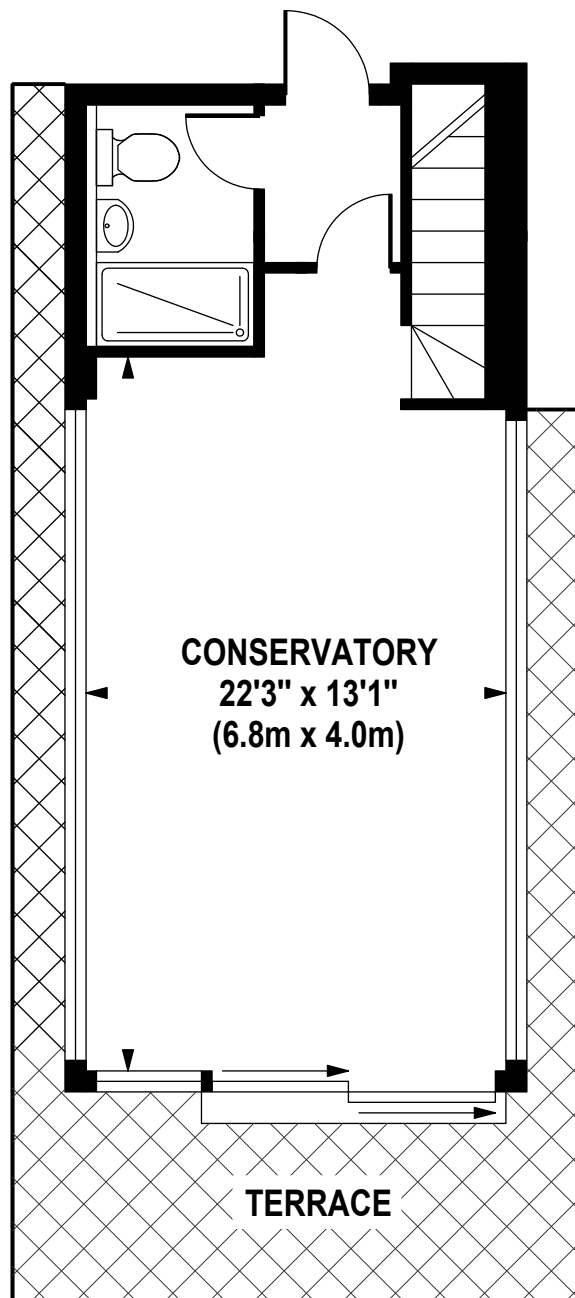


# BOYDELL COURT

Approximate Gross Internal Area 1560 sq ft / 144.9 sq m



**TENTH FLOOR**  
**GROSS INTERNAL**  
**FLOOR AREA 1170 SQ FT**



**ELEVENTH FLOOR**  
**GROSS INTERNAL**  
**FLOOR AREA 390 SQ FT**

Although every attempt has been made to ensure accuracy, all measurements are approximate. The floor plan's for illustrative purposes only and not to scale. Measured in accordance to RICS standards.